



Mfg. & Supp. of all type Furniture

WWW.HARDIKSTEELINDUSTRIES.COM | WWW.INDIAMART.COM/HARDIKSTEELINDUSTRIES

“Let's Built the future together with QUALITY”

METAL STORAGE SYSTEM

STEEL ALMIRAH (HSI 01)

❖ Product Description.



Outside dimensions	Height	Width	Depth
HSI - 001	1980 mm (78")	914 mm (36")	483 mm (19")

Optional

- 4 Shelves and 5 Compartment.
- Sprey paint colour or powder coating.
- Partition- Adjustable or Fixed.

Use

- File storage & other common use.



Features

- Material -High Quality CRCA steel.(JINDAL OR ESSAR)
- Attractive innercabin with more storage area.
- Full openable door with concealed hinges.
- HSI cupboards are available in low height & full height.
- various door options (swing, sliding steel & glass) and with adjustable shelves.

STORAGE LOCKERS (HSI 02)



Product Description:

Overall Outer size of the Locker cabinet

Outside dimensions	Height	Width	Depth
HSI - 1002	1980 mm (78")	914 mm (36")	483 mm (19")

Locker size		
Height	Width	Depth
Six Lockers		
914 mm (36")	305 mm (12")	432 mm (17")
Eight Lockers		
457 mm (18")	457 mm (18")	432 mm (17")
Twelve Lockers		
457 mm (18")	305 mm (12")	432 mm (17")
Eighteen Lockers		
305 mm (12")	305 mm (12")	432 mm (17")

Optional:

- Available Lockers : 6,8,9,12,15,18 and 24
Locking arrangement : pad lock or Inbuilt lock.
- Sprey paint colour or powder coating.
- Material- High Quality CRCA steel.(JINDAL OR ESSAR)

Features:

- * HSI multi compartment lockers are available with various types of hinges.
- * **locking devices, air ventilation** systems available
Handel are provided in each lockers.
- * Doors with concealed hinges and Name **card holder**

MINOR ALMIRAH (HSI 03)



Optional:

- Partition- two or three
- Partition- Adjustable or Fixed.
- Locker are available.

Outside dimensions	Height	Width	Depth
HSI - 1003	1270 mm (50")	762 mm (30")	432 mm (17")

BOOKCASE CABINET (HSI 04)



Product Description:

Overall Outer size of cabinet.

Outside dimensions	Height	Width	Depth
HSI - 1004	1676 mm (66")	838 mm (33")	305 mm (12")

Four openable door.
Four individual lock with two key

USE:

- Book Storag

GLASSDOOR CUPBOARD



Product Description:

Outside dimensions	Height	Width	Depth
HSI - 1005	1980 mm (78")	914 mm (36")	483 mm (19")

Technical Description:

- Four shelves adjustable.
- 4 mm Glass
- Brass Handle.

PIGEON HOLE LOCKERS



Cabinet Size (H) 1980 X (W) 914 X (D) 483

In mm. & Inch : 78" X 36" X 19"

Model	Nos. of Pigeon	Size of Lockers in mm & Inch.		
		H	W	D
HSI 07	24	305 (12")	228 (9")	432 (17")
HSI 08	36	205 (8")	228 (9")	432 (17")
HSI 09	48	150 (6")	228 (9")	432 (17")
HSI 10	72	150 (6")	150 (6")	432 (17")

MOBILE LOCKERS



PERSONAL LOCKERS

Technical Specification

Single & Multi compartment lockers are available with various types of hinges, locking devices, air ventilation systems and various colour options on customer request.



Model No	Descriptions	Width	Depth	Height
012	Single Door Locker	375	458	1802
013	Two Door Locker	375	458	1802
014	Three Door Locker	375	458	1802
015	Four Door Locker	375	458	1802
016	Six Door Locker	375	458	1802

FILLING CABINET



Model No	Descriptions	Width	Depth	Height
017	2 Drawer Filing Cabinet	465mm	645mm	719mm
018	3 Drawer Filing Cabinet	465mm	645mm	1014mm
019	4 Drawer Filing Cabinet	465mm	645mm	1320mm

TOOL CABINET



TOOLISTA



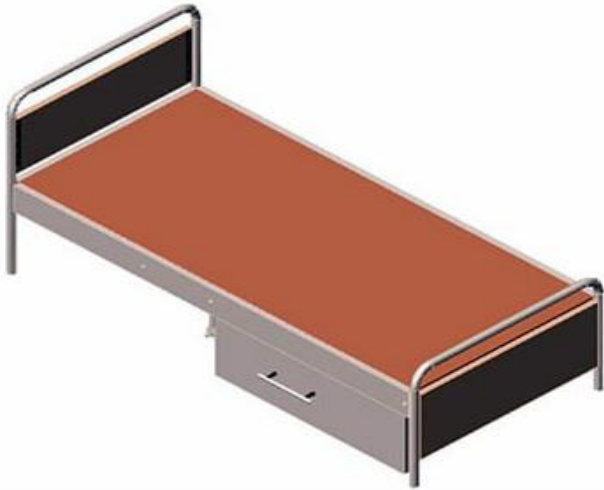
AUTOMOBILE TOOL CABINET

INSTITUTIONAL FURNITURE

LIBRARY FURNITURE



HOSTEL FURNITURE



STUDENT BENCH



CANTEEN FURNITURE



8 seater collapsible stool & Table

Overall Size: 90"W x30"D x30"H

Table top : 90"x30" SS-304

Tool top : SS-202 dish(thali) of 12"dia

structure :30x30x1.6 mm pipe.



6 seater collapsible stool & Table

Overall Size : 72"L x 30"W x 30"H

Table top : 72"x30" SS-304

Tool top : SS-202 dish(thali) of 12"dia

structure :30x30x1.6mm M.S pipe.



MS OFFICE TABLE

Technical Specification



- Size-54"L X30"D X30"H
- Made from prime quality C.R.C.A. Sheet.
- Used for Offices, Schools, Colleges, Residences, Institutes.
- 3 Drawers which runs on telescopic channels one side cabinet
- Single locking system
- 1"x1" frame
- Frame option available for 2"x1" frame also.
- PLB Top.(18MM)



- Size-48'L x24"D X30"H
- 1"x1" frame
- Frame option available for 2"x1" frame also.
- PLB Top.(18MM)
- 3 Drawers which runs on telescopic channels.
- Single locking system



Double pedestal desk



L Shape office Table

STORAGE RACK



SLOTTED ANGLE RACK



HEAVY & Medium DUTY RACK



SUPERMARKET RACK



SUPERMARKET RACK



PALLET RACK



CHAIR



HIGH BACK REVOLVING CHAIR



MEDIUM BACK REVOLVING CHAIR



LOW BACK REVOLVING CHAIR



VISITOR CHAIR



CAFETERIA CHAIR



SEMINAR CHAIR



3 SEATER BENCH

MS & SS LABORATORY FURNITURE



MODULER OFFICE FURNITURE



WWW.HARDIKSTEELINDUSTRIES.COM | WWW.INDIAMART.COM/HARDIKSTEELINDUSTRIES

“Let’s Built the future together with QUALITY”

WOODEN OFFICE TABLE



L SHAPE WOODEN TABLE





RECEPTION TABLE



Reception Front View



Reception Back View



MODULER WORKSTATION





Factsheet

Name of Company	Hardik Steel Industries.
Year of Establishment	1986
Address	<i>B/2 Shankalp Estate, In Shree Hari estate, Panna estate road, Rakhial, Ahmedabad, Gujarat. India.</i>
Nature of Business	<i>Manufacture and Supplier.</i>
Proprieter	<i>PRAHLADBHAI PATEL</i>
Directing Manager	<i>HARDIK PATEL</i>
Total Number of Employees	<i>12-17 Employees</i>
Business Range	<i>All Over INDIA.</i>
Primary Competitive Advantage	<i>Good Financial Position & TQM Large Production Capacity Large Product Line.</i>
Email ID	<i>hardiksteel1018@yahoo.com infohsi1986@gmail.com</i>
Website	<i>www.hardiksteelindustries.com www.indiamart.com/hardiksteelindustries.</i>
Contact no.	<i>+91 8306074645 +91 9824058995</i>